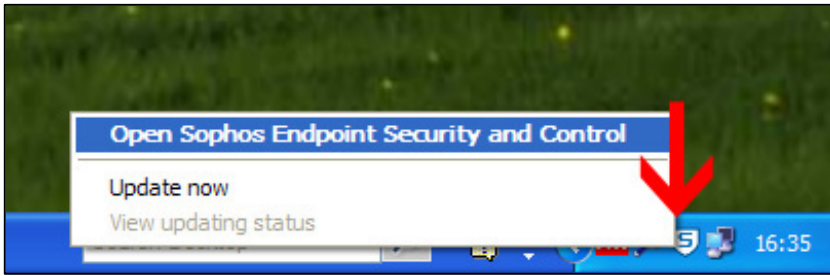
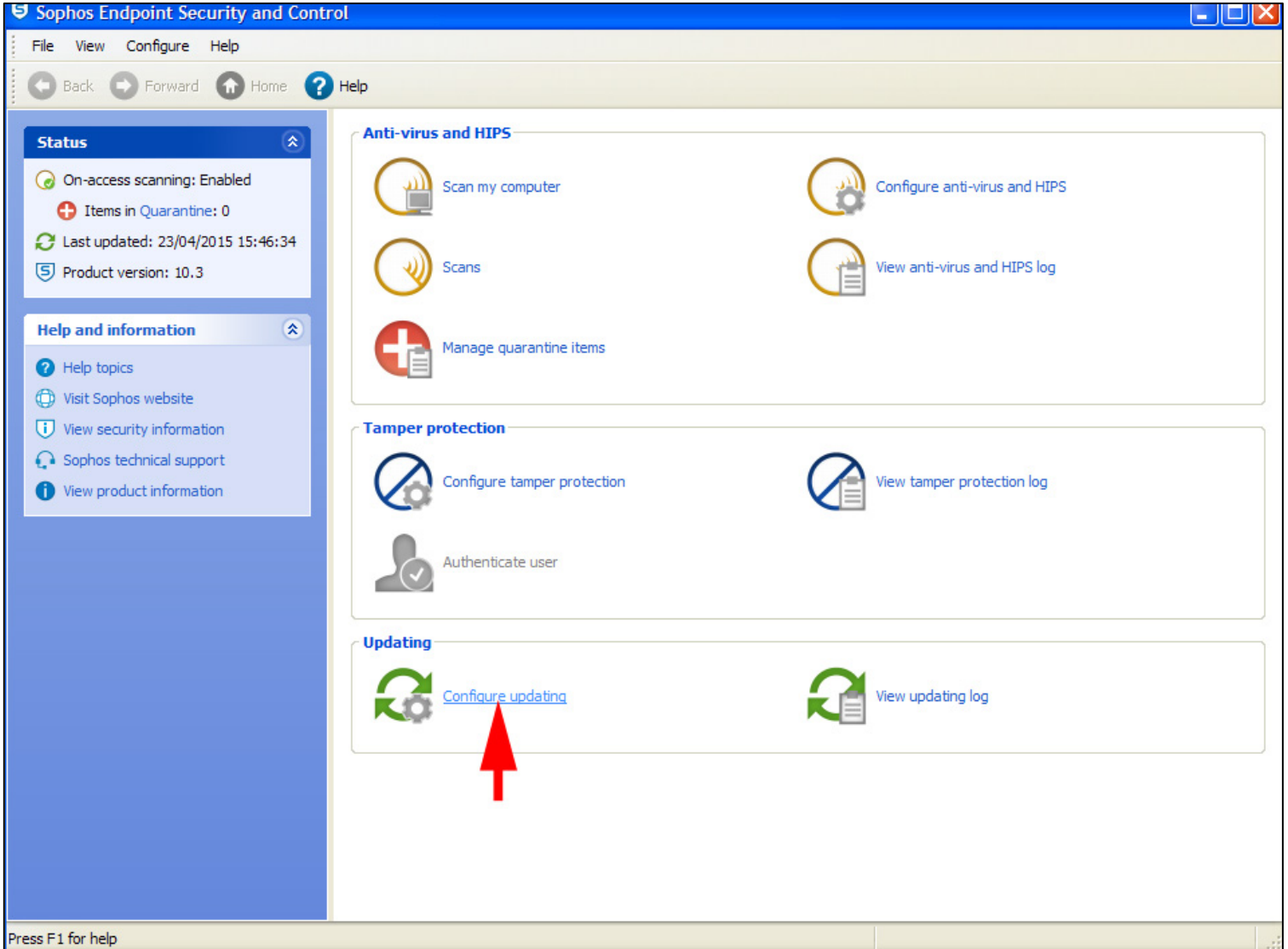


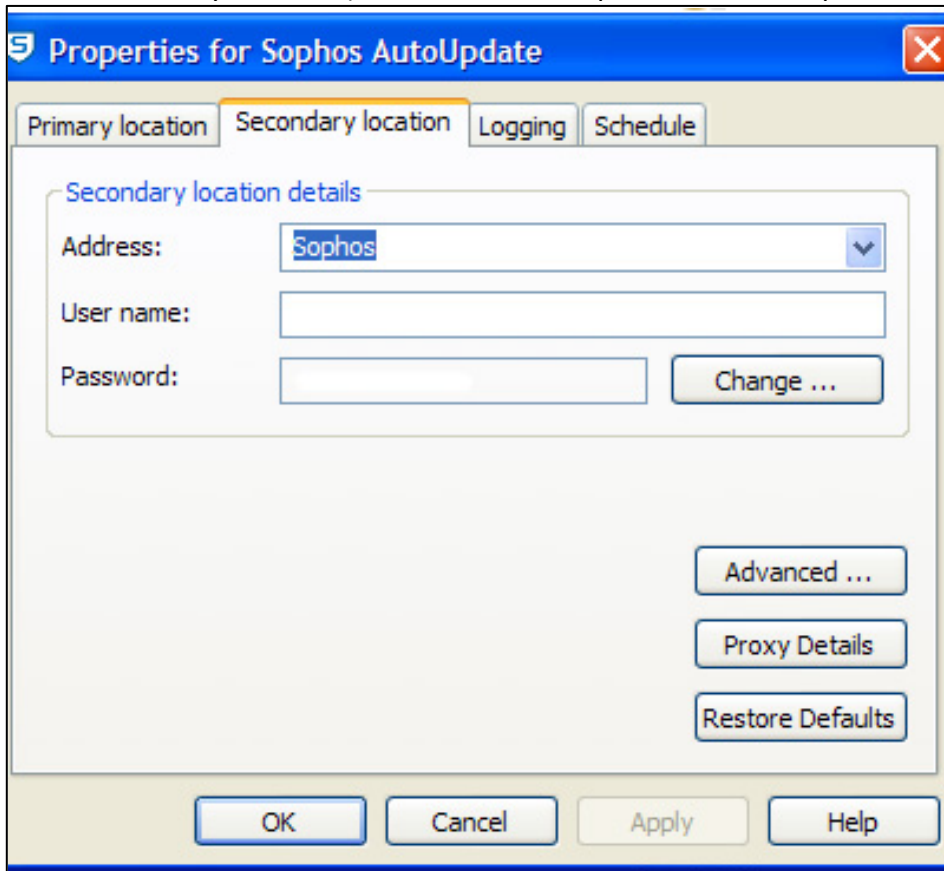
Right click on the Sophos icon then click Open Sophos Endpoint Security and Control



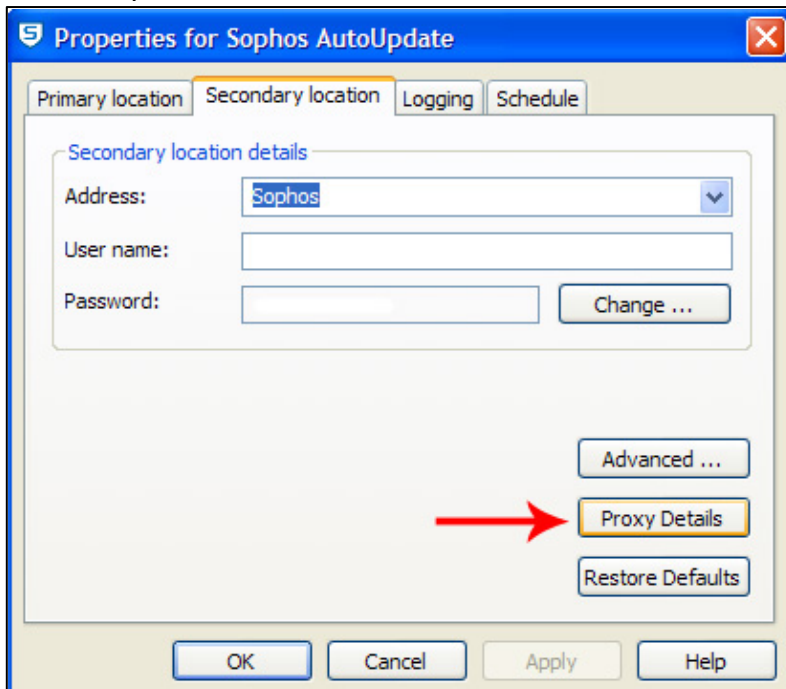
Then click on Configure updating



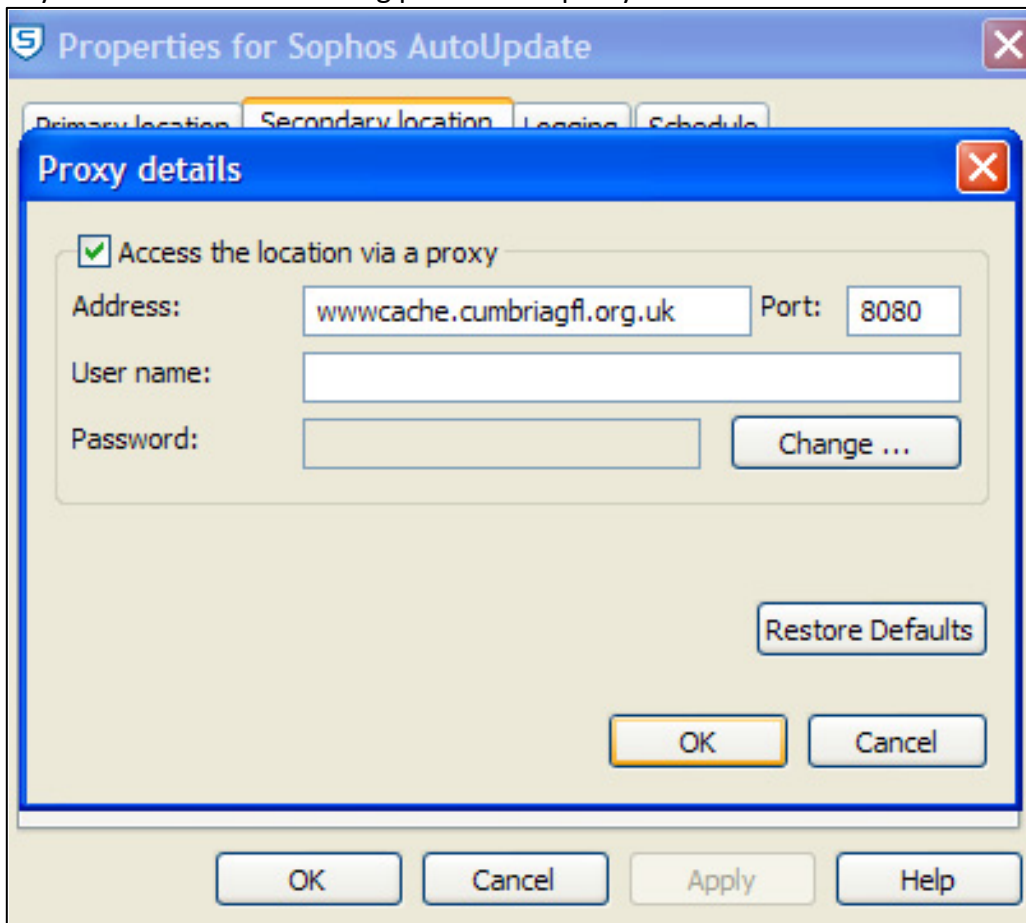
Select Secondary location (the username and password will be pre-filled in)



Click Proxy Details



Input your proxy details, if LUNS or BT Lancashire is your broadband provider then input as below. Otherwise, speak to your broadband or filtering provider for proxy details.



Finally click Ok, then Apply, then Ok